



E-mail: [kk@keyknife.com](mailto:kk@keyknife.com)  
Web site: [www.keyknife.com](http://www.keyknife.com)

**Key Knife, Inc.**  
19100 S.W. 125th Court  
Tualatin, OR 97062, USA  
Phone: (503) 403-2000  
Fax: (503) 691-2240

**Northern U.S.**  
19100 S.W. 125th Court  
Tualatin, OR 97062, USA  
Phone: (503) 403-2000  
Fax: (503) 691-2240

**Southern U.S.**  
2305F HWY 378  
Conway, SC 29527, USA  
Phone: (800) 280-0033  
Fax: (843) 397-7787

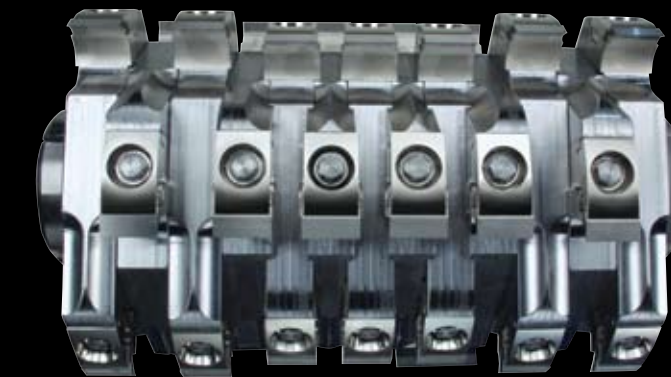
**Western U.S.**  
19100 S.W. 125th Court  
Tualatin, OR 97062, USA  
Phone: (503) 403-2000  
Fax: (503) 691-2240

**Keymatic South Pacific**  
Unit 4/26 Isles Drive  
Coffs Harbor, NSW 2450  
Australia  
Phone: +61-2-6651-8123  
Fax: +61-2-6651-8133

**Western Canada**  
2740 Burrard Street  
Vanderhoof, B.C. V0J 3A0  
Canada  
Phone: (250) 567-2447  
Fax: (250) 567-2468

**Eastern Canada**  
16 J.F. Kennedy Suite 600  
St. Jerome, Quebec J7Y 4B6  
Canada  
Phone: (800) 989-3739  
Fax: (450) 438-5757

**Key Knife Europe**  
PO Box 34  
Siedlung 79  
A-4843 Ampflwang, Austria  
Phone: +43-7675-3220  
Fax: +43-7675-3584



The HY2 is the toughest, most advanced indexible knife system available. Key Knife's next generation drum style chipping system, the HY2 (High Yield 2), is the solution for progressive sawmills that are looking to improve surface finish, chip quality, and operating efficiencies. It is designed and built to perform in the most challenging operating environments around the world. Upgrade to the HY2 chipping system and realize the type of value that goes straight to the bottom line. . . Key Knife VALUE.





## IMPROVED CHIP QUALITY



For decades sawmills have been forced to sacrifice chip quality for recovery and surface finish. Current drum style chipping systems have been unsuccessful at delivering the ideal combination, limiting a mill's earning potential. Key Knife partnered with a few key customers to successfully develop a drum style chipping system that not only improves recovery and surface finish, but also significantly improves chip quality. This is accomplished through several new design enhancements. The HY2's innovative clamping design ensures the knife-edge stays firmly in place for a clean and precise cut. A special ridge located on the bottom of the Ridge Knife XL starts the formation of a uniform chip and provides it a smooth transition to the counterknife. The innovative high capacity counterknife radius reduces pressure off of the chip as it transitions to an expanded gullet. To greatly improve chip flow and chip quality the HY2's gullet is larger and smoother, minimizing the break up of quality chips into pins and fines. Regardless of wood species, dry or frozen, the HY2 will greatly improve your chip quality.

## IMPROVED RECOVERY AND SURFACE FINISH



One of the biggest challenges faced by sawmills today is how to reduce target size and improve surface finish. The majority of drum style chipping systems force a sawmill to increase their green target settings due to excessive fiber pull and knot tear out. Key Knife developed the HY2 to improve the value of your lumber. The HY2 significantly reduces damage to the cant through a consistent tight tolerance cut that minimizes scalloping, fiber pull, and knot tear out, leaving a surface finish second to none. The HY2's ability to make a precise and repeatable cut is especially beneficial during the spline making process. You will no longer have to waste valuable time removing a cant that is stuck due to a poorly cut spline. By upgrading to a HY2 chipping system you will increase the value of your lumber and eliminate costly downtime caused by cant sticking.

## INCREASED OPERATING EFFICIENCY AND SAFETY



To ensure the HY2 is durable, easy to maintain, and cost effective to operate Key Knife used value engineering to design the next generation High Yield system. The HY2 is 30% stronger than previous High Yield systems. A combination of high quality materials and special surface coatings are utilized to ensure the HY2 is tough enough to handle the most challenging drum style chipping applications. Our latest advancement in indexible knife technology, the Ridge Knife XL (Extended Life), is the longest lasting indexible knife available. The Ridge Knife XL gives you the flexibility to run longer and produce more quality lumber between knife changes. The unique design of the Ridge Knife XL makes changing knives a quick and safe process. Simply loosen the bolt, seat the Ridge Knife XL on the counterknife, and tighten the bolt. In addition to quick and safe knife changes, the hazardous task of grinding and babbiting is no longer needed. The HY2 adds value to your products, operating efficiencies, safety conditions, and most importantly...your bottom line!

## EXPANDED GULLET

The larger and smoother expanded gullet enhances chip flow and improves chip quality.

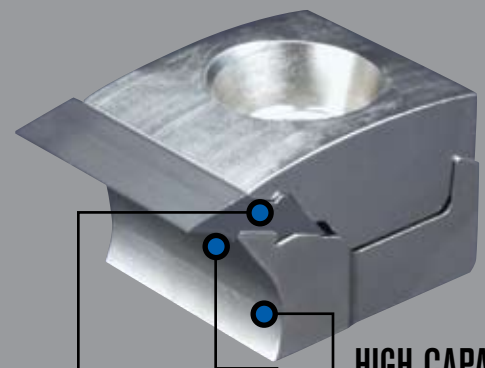


## FULL CONTACT KNIFE CLAMPING

Provides constant pressure across the length of the knife, eliminating knife flutter and packing.

## KNIFE STOPS

Securely holds both knife ends in place to eliminate knife twist for precise edge placement.



## 5 POINT KNIFE CLAMPING

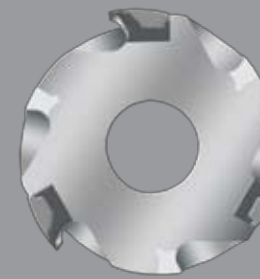
Significantly improves knife stability, for a precise and repeatable cutting path.

## HIGH CAPACITY COUNTERKNIFE RADIUS

Reduces the force on the chip as it exits the cut, minimizing the break up of quality chips.

## RIDGE TECHNOLOGY

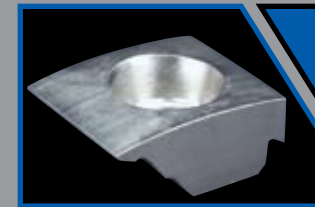
Provides a smooth chip transition from knife tip to counterknife, greatly improving chip quality.



# HY2

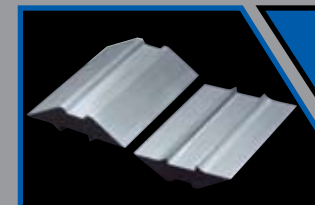
HIGH YIELD 2

## CLAMP



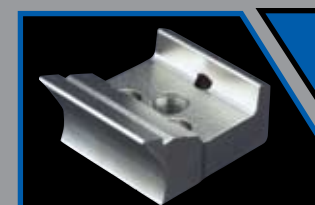
CNC machined from modified A8 tool steel, and nickel plated to protect against corrosion and cracking. The clamp provides full contact clamping over the entire length of the knife to eliminate packing and knife flutter. A high, medium, and low profile clamp is available for various relief and log control needs.

## RIDGE KNIFE XL



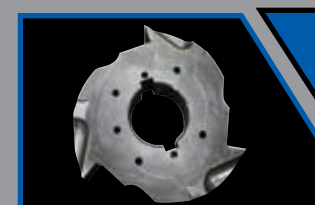
Made from modified A8 tool steel. Hardened in a nitrogen atmosphere for a consistent microstructure, and precision ground for razor sharp edges. The knife is indexible, eliminating the need for grinding and babbiting. The innovative ridge design eliminates undesirable packing and protects the counterknife from wear.

## COUNTERKNIFE



CNC machined from modified A8 tool steel, and nickel plated to protect against corrosion and cracking. An increased counterknife depth provides an extended wear surface. The high capacity radius improves chip flow and relieves pressure off the chip, greatly improving chip quality.

## SEGMENT



CNC machined from A514 T1 structural steel for strength and durability. The smoother and larger expanded gullets improve chip flow. Knife stops are machined into each segment to lock in both ends of the Ridge Knife XL to eliminate knife twist for precise edge placement.

