



BCS III Chipper System

TOUGH. SIMPLE. ECONOMICAL.

Key reasons to upgrade your chipper to a Key Knife System:

Maximize Chip Quality

Key Knife's innovative Uni-Ridge Knife utilizes an optimal tip to breaker distance to consistently formulate a uniform chip. A large ridge located on the bottom of the knife provides a smooth transition from the knife across the holder, greatly reducing the break up of quality chips into pins and fines.

Increase Production

The BCS III Chipper System increases production through a longer lasting knife-edge, and a tough durable design. The new Uni-Ridge Knife has proven to last twice as long as other brands of indexable and conventional knife systems. Chipping operations benefit from less downtime and more production.

Reduce Operating Costs

Key Knife's indexable Uni-Ridge Knife eliminates the need to grind knives, and the associated labor, maintenance, and part costs. To further reduce operating costs the Uni-Ridge Knife can be rehonored using the compact Pro-Honer.

Safety

The small indexable Uni-Ridge Knife eliminates the use of hazardous molten material for knife babbiting, minimizes knife handling, and consequently increases safety in the work area.

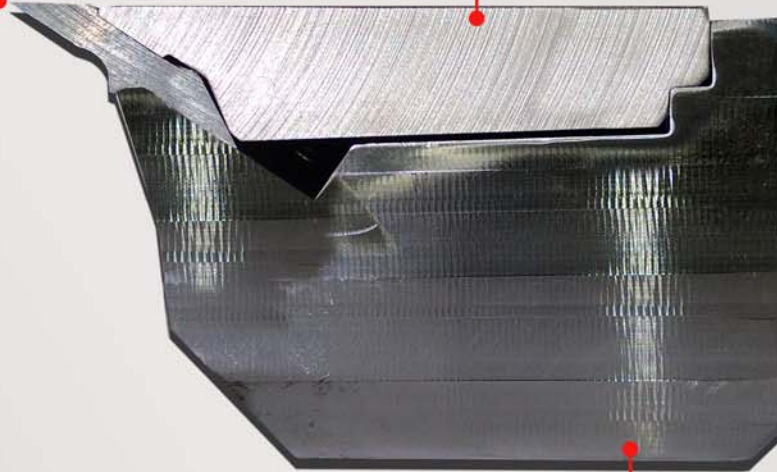


Uni-Ridge Knife

The knife is manufactured from a modified tool steel for exceptional knife life. An optimal tip to breaker distance enhances chip formation, resulting in improved chip quality. An oversized single ridge located on the bottom of the knife improves chip flow, and protects the holder from wear. The knife is indexable and rehonable, eliminating the need for grinding and babbitting.

Clamp

The clamp is precision ground and CNC machined from 4340 steel. The clamp locates on the back shelf of the holder and on the Uni-Ridge Knife's top key to produce Bridge Clamping forces. Bridge Clamping increases knife stability and reduces knife flutter. Enlarged teardrop counterbores reduce packing around the clamp bolt, making knife changes quicker and easier.



Holder

The holder is CNC machined from A514 structural steel. A diamond carbide powder is weld-fused to the contact surface ensuring the longevity of the holder in even the most aggressive applications.



Pro-Honer II

Compact knife rehone cuts knife costs by enabling Key Knives to be reused.

Western US

(P): (503) 403-2000
(F): (503) 691-2240

Southern US

(P): (800) 280-0033
(F): (843) 397-7787

Northern US

(P): (250) 567-2447
(F): (250) 567-2468

Western Canada

(P): (250) 567-2447
(F): (250) 567-2468



www.keyknife.com
kk@keyknife.com

Eastern Canada

(P): (800) 989-3739
(F): (450) 438-5757

Europe

(P): +43-7675-3220
(F): +43-7675-3584

South America

(P): +(49) 7431-549-255-10

South Pacific

(P): +61-2-665-18123
(F): +61-2-665-18133