



**Northern U.S.**

19100 S.W. 125th Court  
Tualatin, OR 97062, USA  
Phone: (503) 403-2000  
Fax: (503) 691-2240

**Southern U.S.**

2305F HWY 378  
Conway, SC 29527, USA  
Phone: (800) 280-0033  
Fax: (843) 397-7787

**Western U.S.**

19100 S.W. 125th Court  
Tualatin, OR 97062, USA  
Phone: (503) 403-2000  
Fax: (503) 691-2240

**Western Canada**

2740 Burrard Street  
Vanderhoof, B.C. V0J 3A0  
Canada  
Phone: (250) 567-2447  
Fax: (250) 567-2468

**Eastern Canada**

16 J.F. Kennedy Suite 600  
St. Jerome, Quebec J7Y 4B6  
Canada  
Phone: (800) 989-3739  
Fax: (450) 438-5757

**Key Knife Europe**

Siedlung 79  
A-4843 Ampflwang  
Austria  
Phone: + 43-7675-3220  
Fax: + 43-7675-3584

**Key Knife South Pacific**

**Pty Ltd**  
Unit 4 / 26 Isles Drive  
Coffs Harbour NSW 2450  
Australia  
Phone: + 61-2-6651-8123  
Fax: + 61-2-6651-8133

**Key Knife Chile Inc. Ltda**

Americo Vespucio Nte 800 #902  
Las Condes - CHILE  
Cell: + (56) 9-8829-6578  
Office: + (56) 2-813-2917

**Key Knife, Inc.**

19100 S.W. 125th Court  
Tualatin, OR 97062, USA  
Phone: (503) 403-2000  
Fax: (503) 691-2240

**E-mail:** [kk@keyknife.com](mailto:kk@keyknife.com)

**Web site:** [www.keyknife.com](http://www.keyknife.com)



Key Knife has revolutionized whole log chipping by developing a chipping system that delivers unmatched durability, ease of use, performance, and flexibility. The KPS Chipper System is designed for the progressive mill that is looking for new cutting edge technology to greatly improve chip quality and operating efficiencies. Whether you chip softwood, hardwood, frozen wood, or dry wood the KPS's flexibility gives you increased control over your operation and chip distribution.



## IMPROVED CHIP QUALITY



The KPS's innovative Uni-Ridge Knife consistently formulates a uniform chip and provides a smooth transition from the knife across the counterknife. The smooth transition greatly reduces the break up of quality chips into pins and fines. To improve chip modulation the KPS gives you the flexibility to adjust knife attack by simply changing the knives. Now more than ever you have greater influence over your mills chip quality and distribution.

## INCREASED PRODUCTION



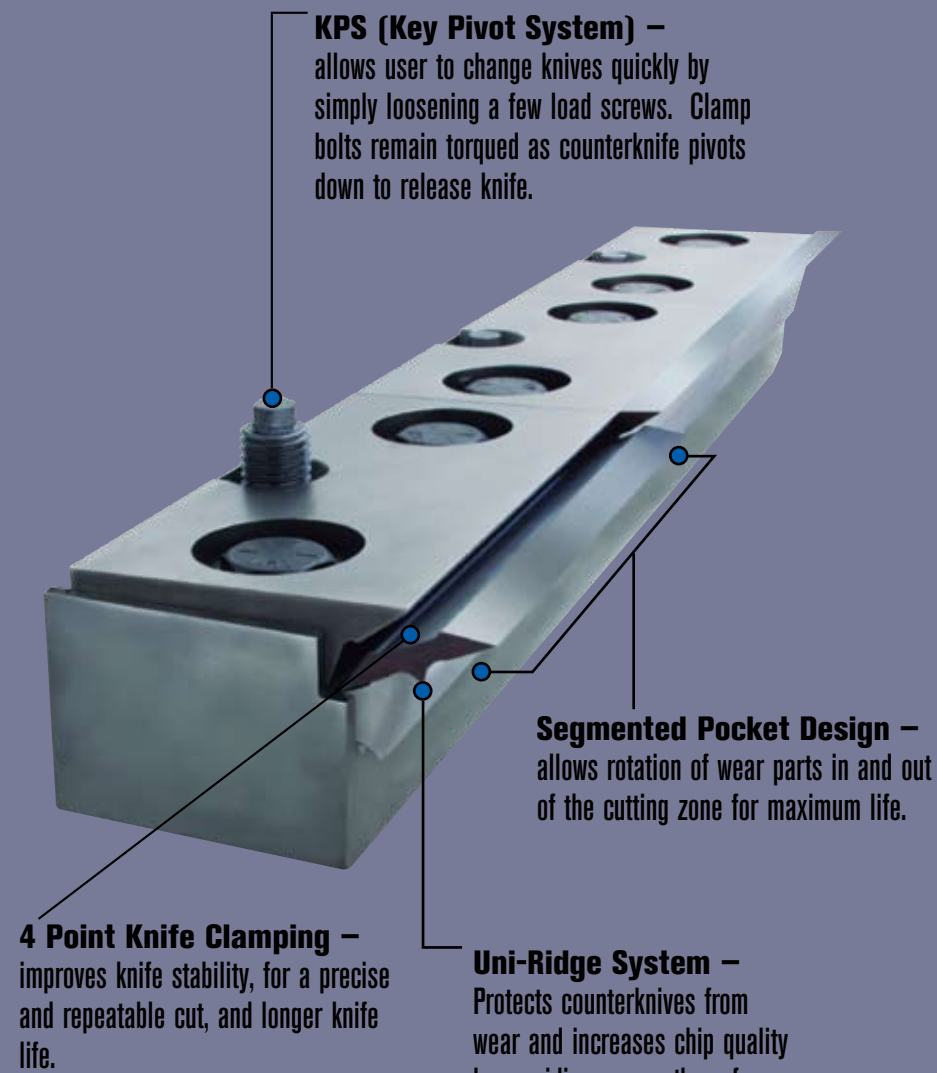
The KPS Chipper System increases production through a longer lasting knife edge, quick knife change, and a tough durable design. The Uni-Ridge Knife's 2 precision ground edges have proven to last twice as long as other indexible and conventional knife systems. This gives you the option to continuously run longer and increase production during a shift. The innovative Key Pivot System significantly shortens the time it takes to change knives. Simply turn a few load screws to release the knives. No more loosening dozens of clamp bolts. Due to the KPS's solid design and use of quality materials downtime caused by system failure is virtually eliminated, ensuring your chipper stays running.

## INCREASED OPERATING EFFICIENCY AND SAFETY



The smaller indexible Uni-Ridge Knife is safer to handle, and eliminates the costly task of grinding and babbitting. The innovative Key Pivot System allows for quick one-man knife changes to be made in less than 30 minutes. Unlike all other whole log chipper systems, the KPS utilizes a segmented pocket design. This allows for the rotation of wear parts in and out of the cutting zone for longer part life. The advanced segmented pocket design is of significant value when metal contaminants enter the system. Instead of having to replace the entire assembly, simply replace or rotate the damaged parts out of the cutting zone to save time and money.

## FEATURES



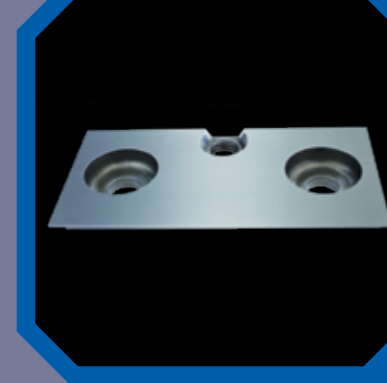
**KPS (Key Pivot System)** – allows user to change knives quickly by simply loosening a few load screws. Clamp bolts remain torqued as counterknife pivots down to release knife.

**Segmented Pocket Design** – allows rotation of wear parts in and out of the cutting zone for maximum life.

**4 Point Knife Clamping** – improves knife stability, for a precise and repeatable cut, and longer knife life.

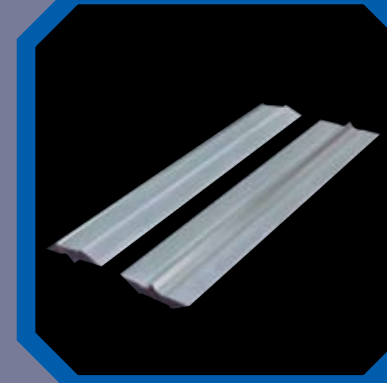
**Uni-Ridge System** – Protects counterknives from wear and increases chip quality by providing a smooth surface for the chip to travel.

## CLAMP



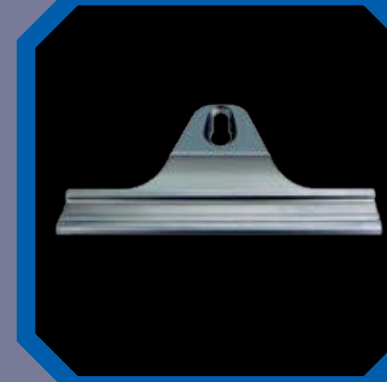
The clamp is precision ground and CNC machined from forged 4340 steel. A locating feature clamps down on the top key of the Uni-Ridge Knife for added stability, eliminating knife movement during operation.

## UNI-RIDGE KNIFE



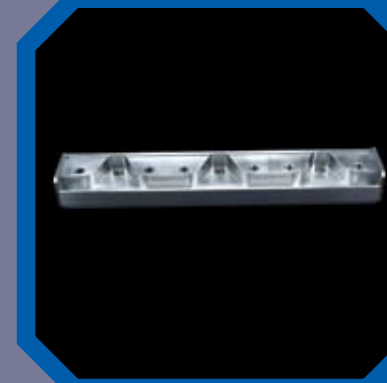
The knife is manufactured from modified tool steel for exceptional knife life. An optimal tip to breaker distance enhances chip formation, resulting in improved chip quality. An oversized single ridge located on the bottom of the knife improves chip flow, and protects the counterknife from wear. The knife is indexable and rehonable, eliminating the need for grinding and babbitting.

## COUNTERKNIFE



The counterknife is CNC machined from forged 4340 steel and precision ground to mate perfectly with the Uni-Ridge Knife. Diamond carbide is weld-fused to the contact area for additional wear resistance.

## HOLDER



The holder is CNC machined from 4340 steel. A diamond carbide powder is weld-fused to the contact surface ensuring the longevity of the holder in even the most aggressive applications. An end plate is welded to each end of the holder to block contaminants from entering the system.

