



Drum Chipper Retrofit System

TOUGH. DEPENDABLE. ECONOMICAL.

Key reasons to upgrade your drum chipper to a Key Knife System:

Increase Production

Key Knife's Retrofit Systems increase production through a longer lasting knife-edge, and a tough durable design. The new Uni-Ridge Knife has proven to last twice as long as other brands of indexable and conventional knife systems. Chipping operations benefit from less downtime and more production.

Maximize Chip Quality

Key Knife's innovative Uni-Ridge Knife utilizes an optimal tip to breaker distance to consistently formulate a uniform chip. A large ridge located on the bottom of the knife provides a smooth transition from the knife across the counterknife, greatly reducing the break up of quality chips into pins and fines.

Reduce Operating Costs

Key Knife's indexable Uni-Ridge Knife eliminates the need to grind knives, and the associated labor, maintenance, and part costs. In addition, a few retrofit configurations utilize an innovative two-sided counterknife, which cuts counterknife costs in half. To further reduce operating costs the Uni-Ridge Knife can be rehonored and reused using Key Knife's compact Pro-Honer II.

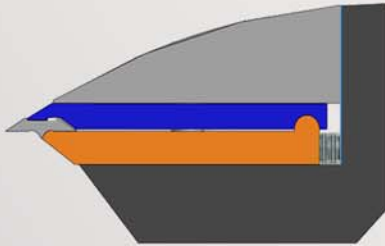
Safety

The small indexable Uni-Ridge Knife reduces the risk of injury caused by handling heavy conventional knives. In addition, the disposable Uni-Ridge Knife eliminates the hazardous task of babbitting knives.



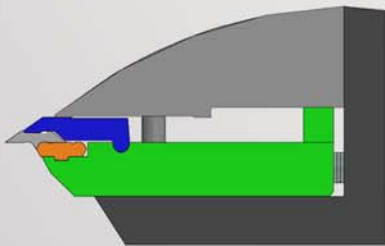


Drum Chipper Retrofit System Configurations



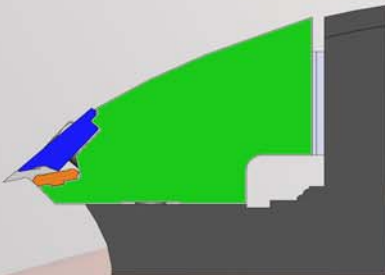
Cassette configuration

This configuration uses a simple cassette-style assembly that mounts between the drum and OEM clamp. The Key Knife clamp and counterknife are linked together for accurate clamping. Shim packs are used to adjust knife tip location. No modification to the drum is necessary.



Holder configuration

This configuration uses a holder to mount Key Knife clamps and counterknives between the drum and OEM clamp. This unique design allows for the use of an indexable counterknife. Shim packs are used to adjust knife tip location. No modification to the drum is necessary.



Holder configuration (for shallow pocket drum chippers)

This configuration is for drum chippers that have shallow pockets, preventing the use of Key Knife's cassette and standard holder configurations. This configuration replaces the OEM clamp with a holder used to mount Key Knife clamps and indexable counterknives. Shim packs are used to adjust knife tip location. No modification to the drum is necessary.



Pro-Honer II

Compact knife rehone enables mills to cut their knife cost by rehoneing and reusing Key Knives.

Western US
(P): (503) 403-2000
(F): (503) 691-2240

Southern US
(P): (800) 280-0033
(F): (843) 397-7787

Northern US
(P): (250) 567-2447
(F): (250) 567-2468

Western Canada
(P): (250) 567-2447
(F): (250) 567-2468

Eastern Canada
(P): (800) 989-3739
(F): (450) 438-5757

South America
(P): +(56) 9-8829-6578

Europe
(P): +43-7675-3220
(F): +43-7675-3584

South Pacific
(P): +61-2-665-18123
(F): +61-2-665-18133



www.keyknife.com
kk@keyknife.com